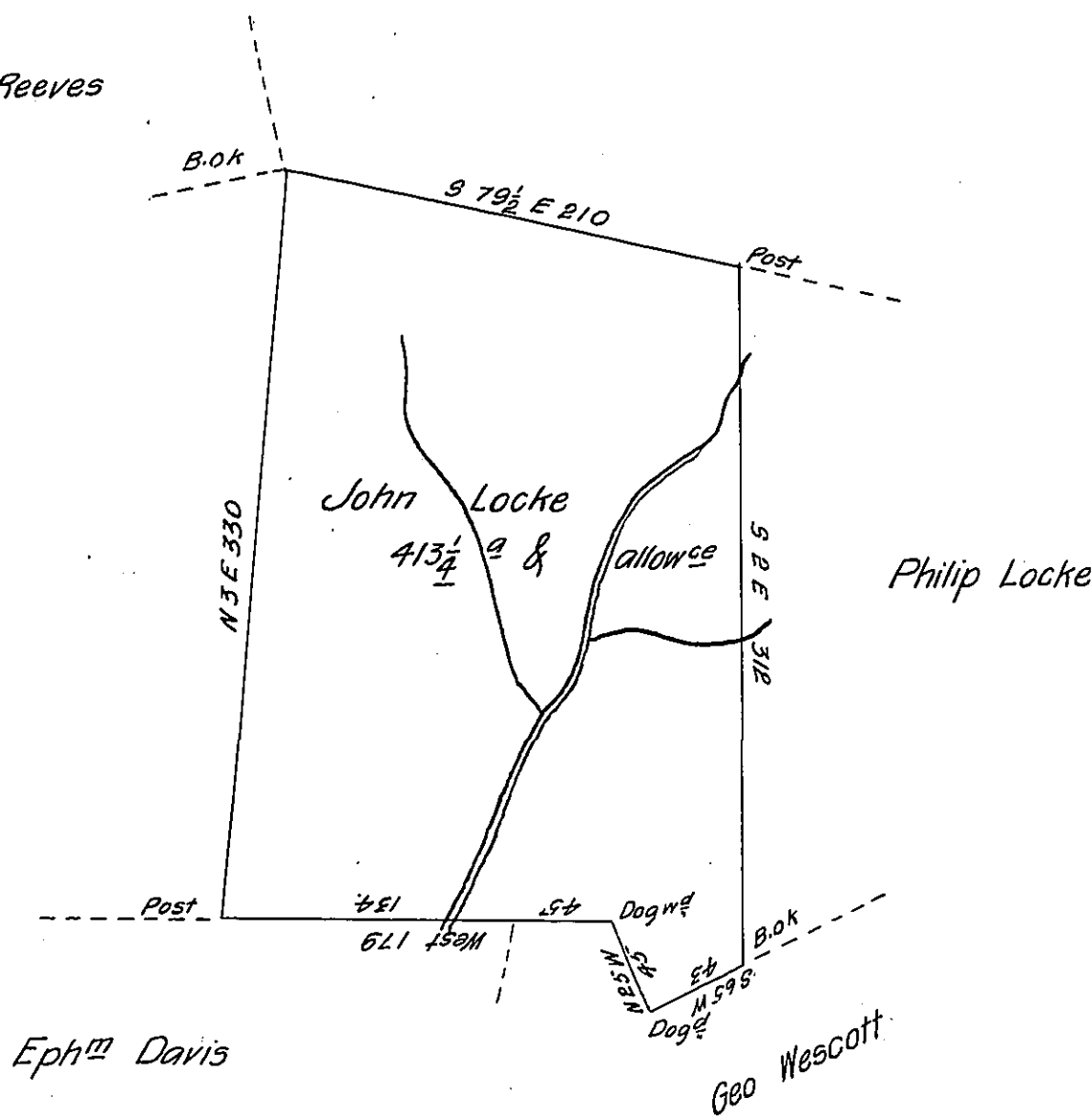


Peter Reeves



Ephm Davis

Geo Wescott

Survey'd to John Locke on the 11th day of Nov^r 1784. The above described Tract of four hundred & thirteen acres & a quarter of an acre & allowance of six P. Cent. Situate on the Waters of crooked creek adjoining Philip Locke in Westmorland County. By Warrant of the 3^d of July 1784.

Joshua Elder D.S.

John Lukens Esq^r S. Gen^l

IN TESTIMONY that the above is a copy of the original remaining on file in the Department of Internal Affairs of Pennsylvania, made conformably to an Act of Assembly approved the 16th day of February, 1833, I have hereunto set my Hand and caused the Seal of said Department to be affixed at Harrisburg, this twenty fourth day of July 1905.

Loac P Brown
 Secretary of Internal Affairs.